

## Slide & Tilt System

### Technical Reference



## Contents

- Functionality
- Working Parameters
- Fixing Instructions
  - Front Bracket Assembly
  - Track Assembly
- Fixtures - Torque Setting
- Installation Considerations
- Slide and Tilt Kit

## Functionality

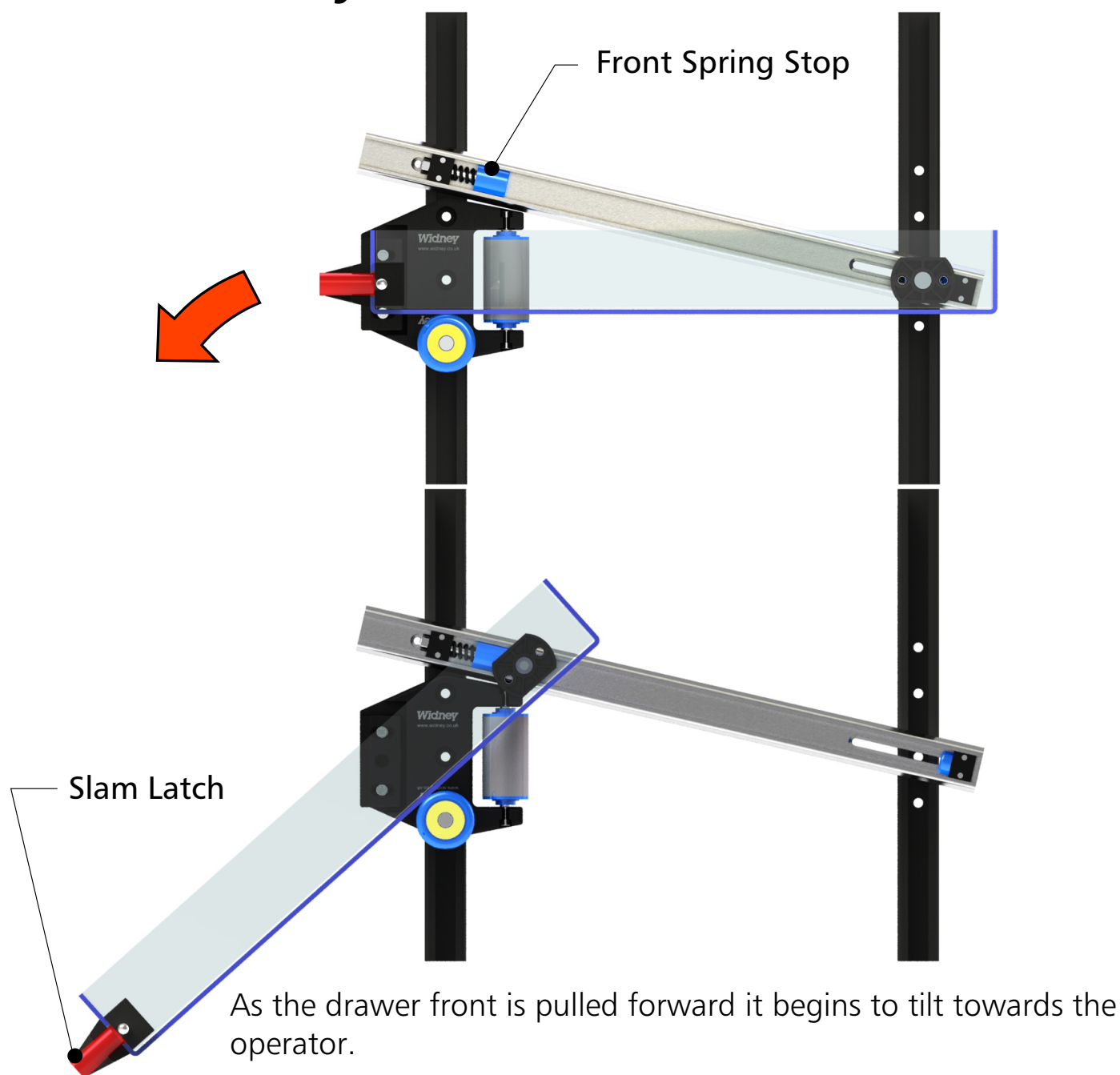
### Slide & Tilt Mechanism

Primarily used in the emergency vehicle industry, the mechanism is a series of plastic mouldings and aluminium extrusions, which when installed provide easy access to storage required by emergency service teams.

As the name suggests, the mechanism causes the attached drawers to safely tilt toward the operator as they slide out, providing both visual and physical access to their contents.



## Functionality (Continued)



As the drawer front is pulled forward it begins to tilt towards the operator.

The amount the tray tilts is preset by the installer, dependent on where the front spring stops are fixed, as well as the angle of the aluminium rails. The closer the stops are to the front of the rail channel, the steeper the angle of incline.

A slam latch can be supplied as an optional extra.

## Working Parameters

### Slide & Tilt Mechanism

The following working parameters are recommended:-

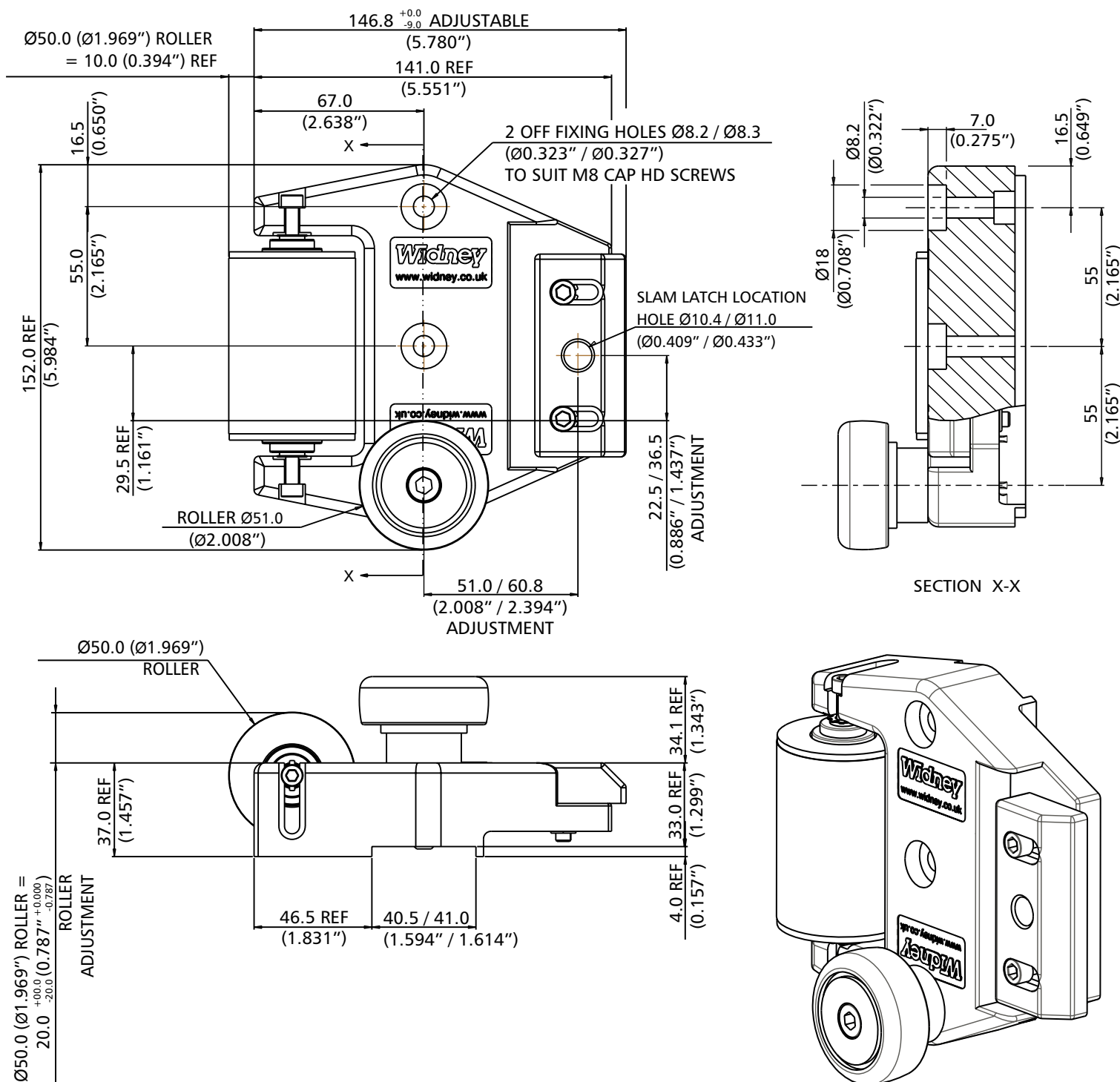
- Working temperature range -40°C to +70°C
- Short term exposure -50°C to +120°C
- 60,000 cycle life at 35 kgs (77 lbs)\*
- Loaded shock/vibration resistant
- Max working load 100 kgs\*\*

\*Please note that for health and safety reasons, single loads of 35kgs and above should not be manually lifted into the Slide and Tilt drawers.

\*\*Contact us for high load performance data.

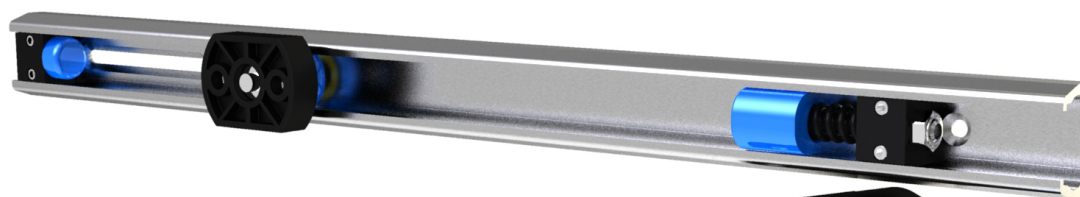
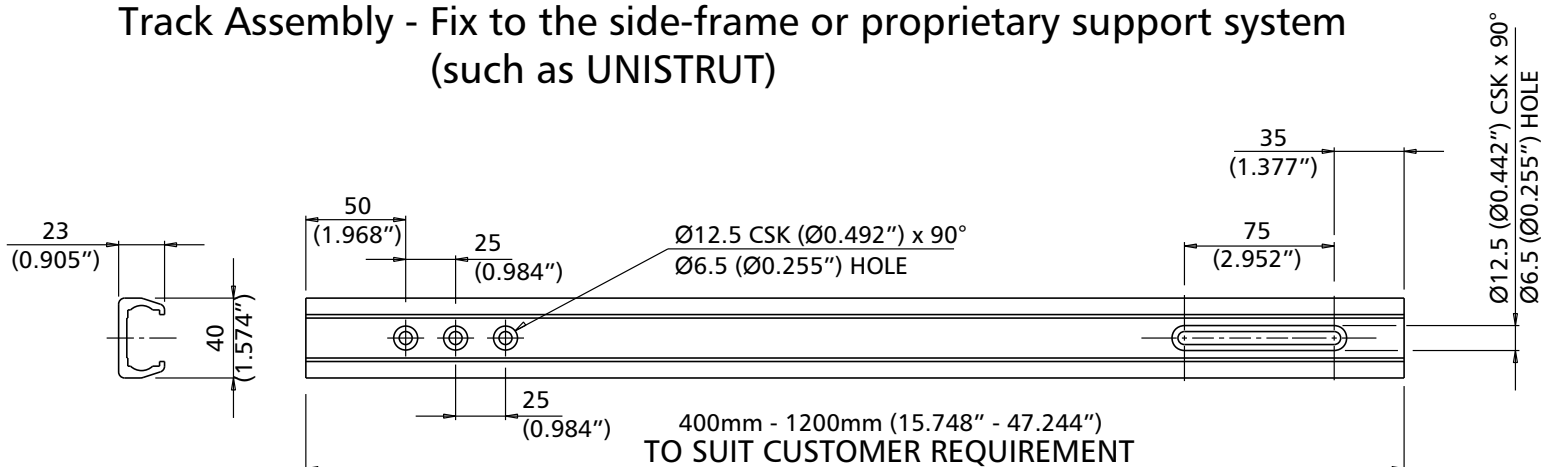
## Fixing Instructions

Front Bracket Assembly - Fix to the side-frame or proprietary support system (such as UNISTRUT)



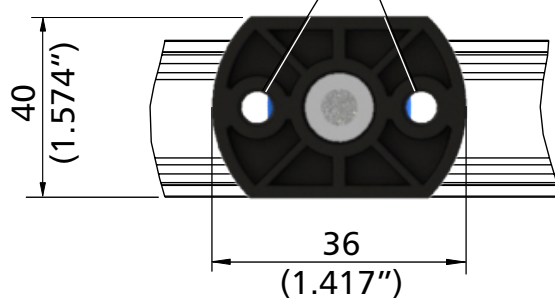
## Fixing Instructions

Track Assembly - Fix to the side-frame or proprietary support system  
(such as UNISTRUT)



M8 Nyloc Nut

40 mm to 44 mm  
(1.574" to 1.732")



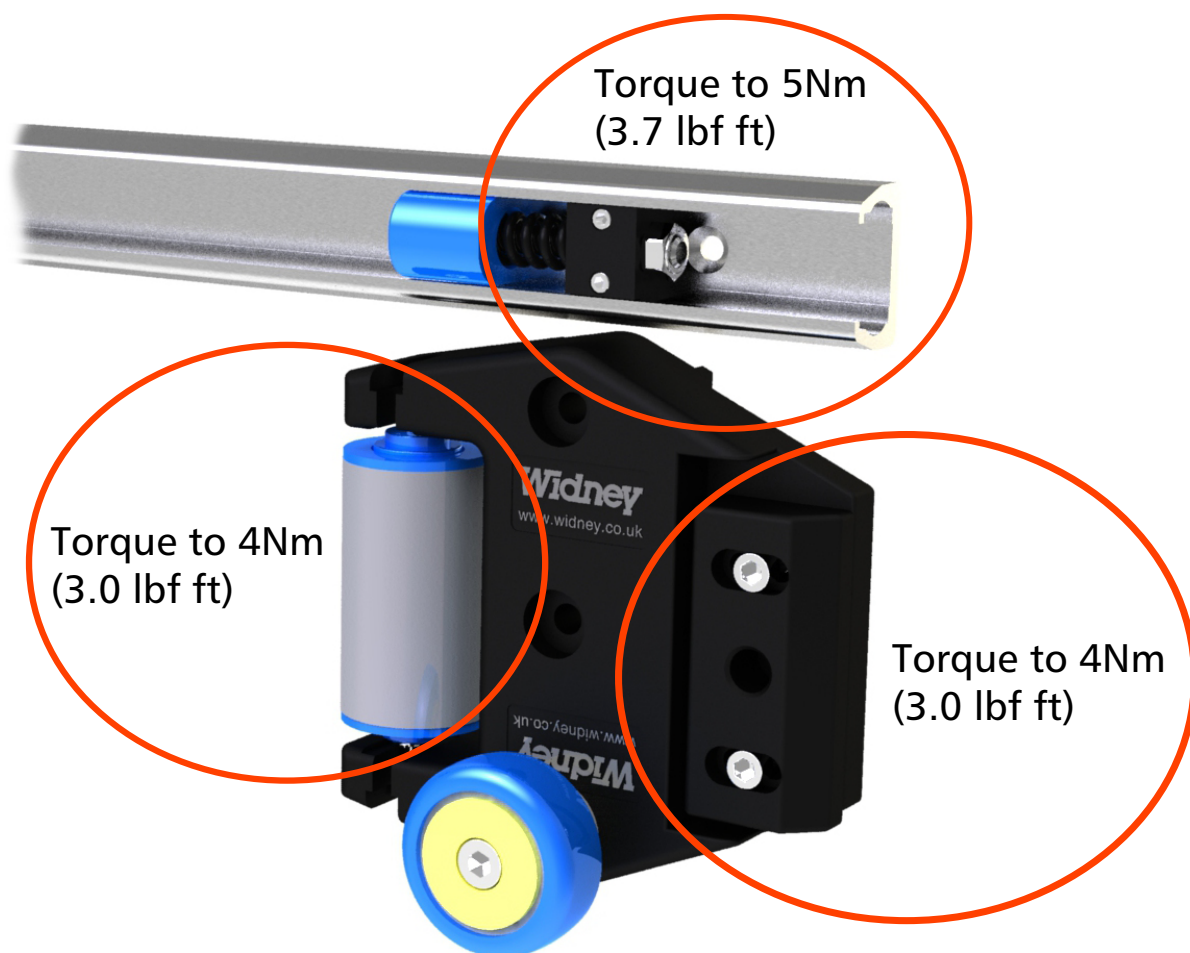
Rear Stop  
(Adjusted by customer)

Drawer Carrier  
(Fix to drawer side)

Front Spring Stop  
(Adjusted by customer)



## Fixtures - Torque Settings



When fixing the Slide and Tilt system to the vehicle use M8 bolts and torque to 20Nm - 22Nm (14.8 - 16.2 lbf ft).

The above are recommended torque settings for the fasteners indicated.

Considerations must be made for the force of a loaded tray impacting upon the stops.

Please note that whilst the mechanism has successfully been tested up to 100kgs (220lbs), safe working practice would dictate that loads above 35kgs (77lbs) should not be stored in higher level Slide and Tilt drawers.



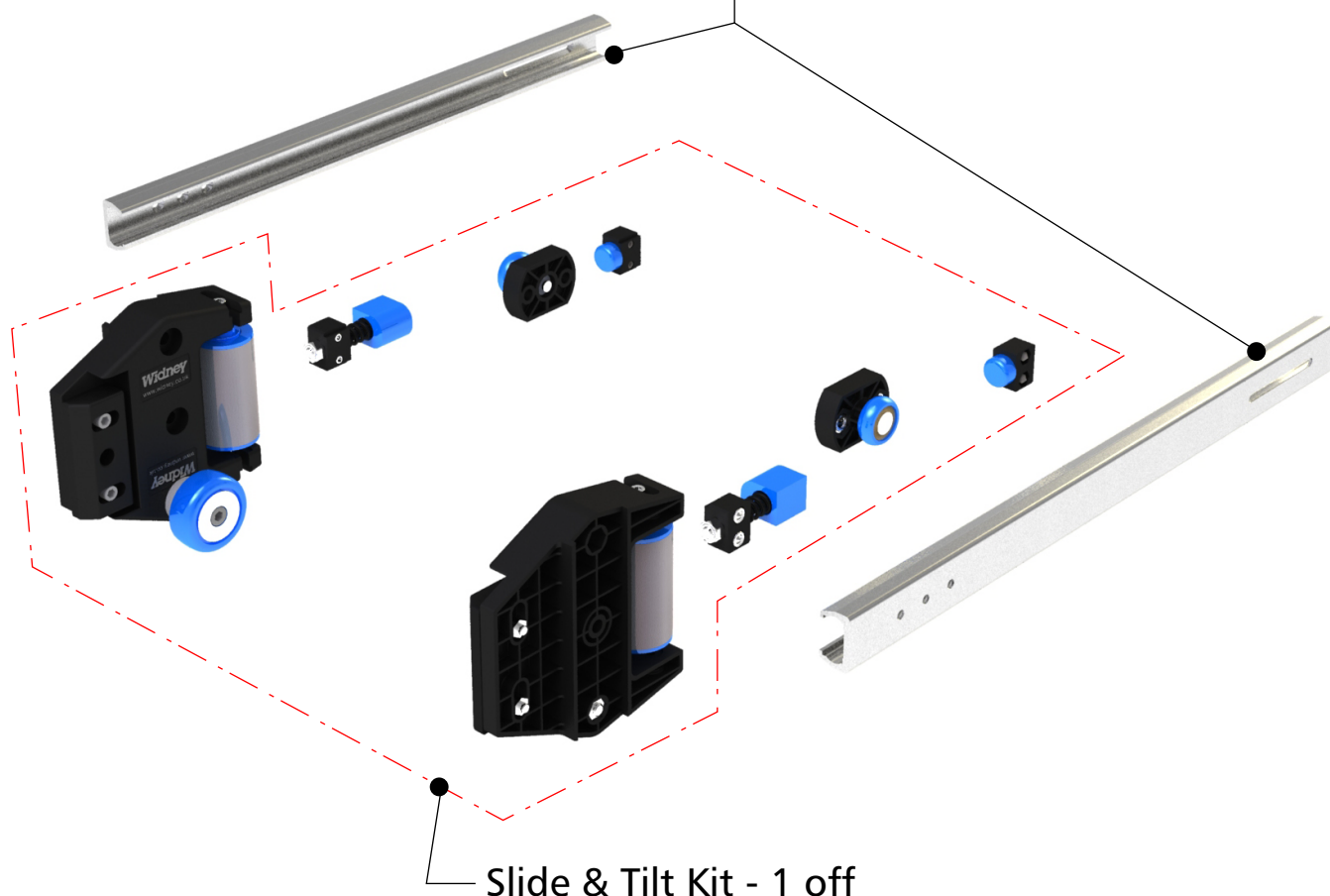
## Installation Considerations

Some considerations to take into account when installing the Slide and Tilt system are:-

- Tilt - The angle can be changed by adjusting the front spring stops.
- Locker clearance - When installed is there clearance for the shutters and drawer front handle?
- Safety - Operators should be made aware of safety issues when operating high level drawers.
- Stack height is dependent upon the angle of tilt required.

## Slide & Tilt Kit

Aluminium Rails - available from 400mm to 1200mm long (supplied in pairs)



The mechanism comprises a set of plastic mouldings incorporating:-

- LH/RH front roller assemblies
- 2 Front spring stop assemblies
- 2 Rear fixed stop assemblies
- 2 Carrier assemblies
- 2 Aluminium rails

Widney Manufacturing Ltd reserves the right to supply components that differ in detail from those illustrated and to withdraw any product.